

Block-Moulding-Machine EBV/EBH

Block-Moulding-Machine EBV-FB



Erlenbach Block-Moulding-Machine –
Vertically operating –
Horizontally operating

Erlenbach Block-Moulding-
Machine – Vertically operating –
Flexible dimensions

Block-Moulding-Machine type EBV/EBH

Service description of the Block-Moulding-Machines

The entire generation of ERLENBACH-EPS-block-moulding-machines guarantees an optimum accommodation in view of your assortment of products and location. If desired, ERLENBACH will project the complete production-unit.



Advantages of the ERLENBACH-EPS-block-moulding-unit type EBV

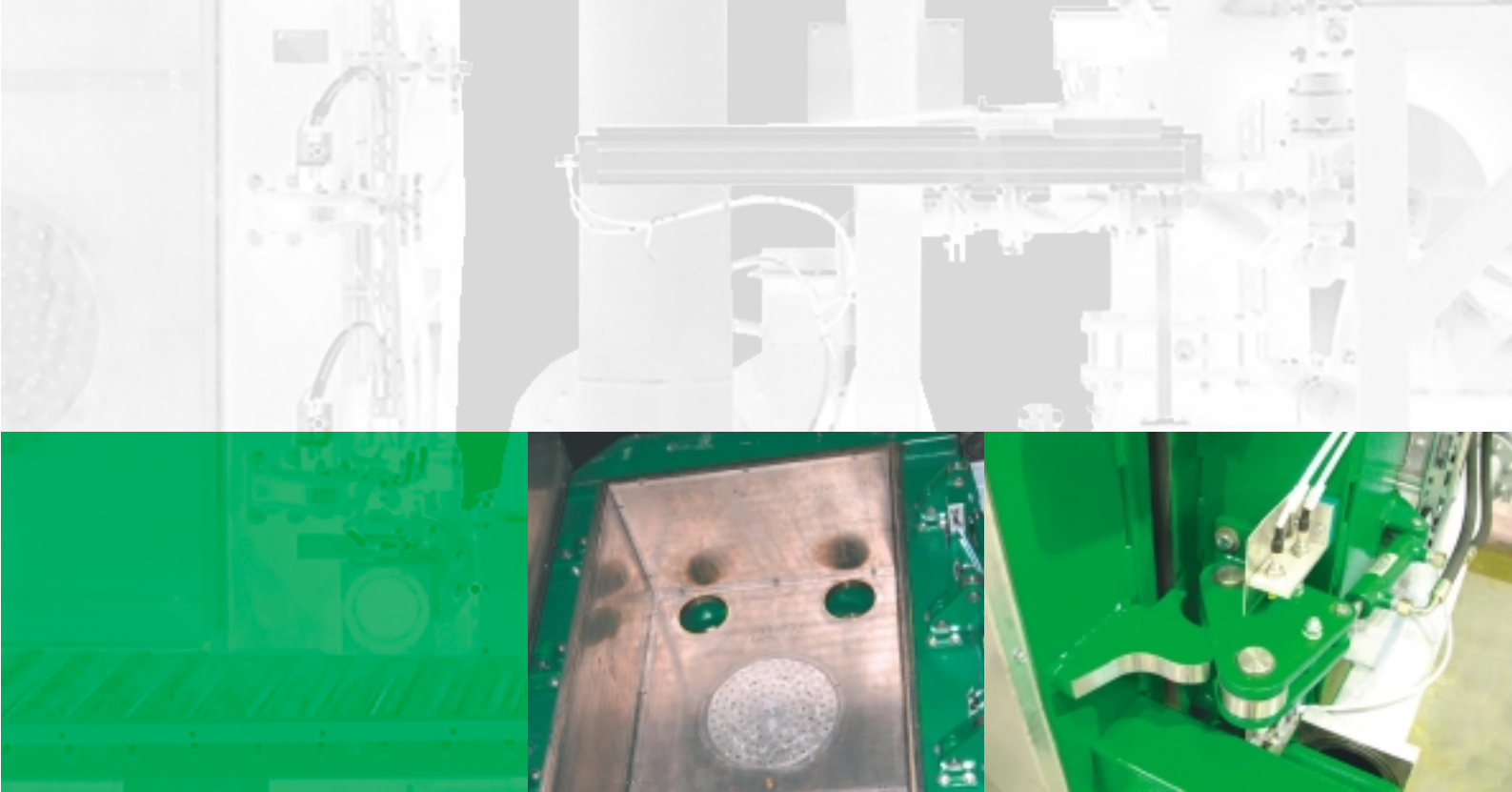
- Minimum space-requirements
- Fixed inner-walls; – thus reduced maintenance – operations required and low steam consumption values due to the relatively small steam-chamber-volumes
- Blocks slightly tapered; – thus: easy demoulding –
- Reduced maintenance-operations of the entire unit (due to automatic-greasing-units at bearings)

The combination with the filling-system in line with an optimised steaming-process and a sophisticated vacuum-unit, highest quality-standards of the moulded blocks at the best efficiency are achieved, such as:

- Homogeneous weight-distribution inside the block
- Best fusing-quality inside the block
- Extremely low moisture-content of the block
- Fast cycling
- Long maintenance-intervals
- Low energy-consumption
- High availability of the production-unit

Accessories

- Mixing-station for the dosing of recycling-EPS
- Weighing scale
- Quality-assurance-package
- BJ-printer for EPS-blocks
- Block-transport-units
- Water-cooling-systems for the vacuum-plant
- Block-storage systems



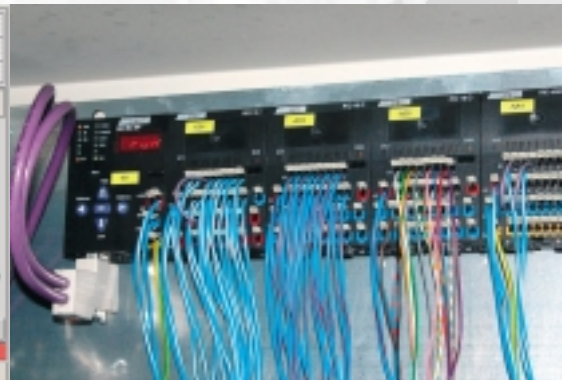
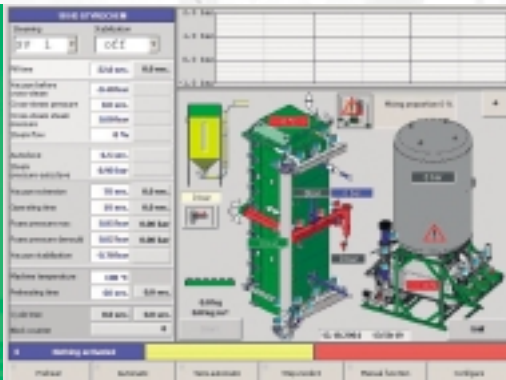
Engineering parameters

- 'closed-type' block-moulding-machine, rigid and leakage-free construction
- Integrated steam-routing into the block-machine, reduced number of sealing-points, short steam-routing (meaning less volume = less consumption and less maintenance required)
- insulated machine body
- Inner wall coating
Standard - rustproof sieving unit (free area 11%) - longer cleaning

intervals at the manufacturing of material with high dust rate.

- Reduced maintenance-requirements at all bearings and links
- 'Long-life' door-gasket
- Vacuum-unit with vessel and steam-condenser; saving energy and efficiently operating.





modern communication interface/machine control

By implementing modern technologies, the technological development makes allowance for the total system, without losing sight of the operator. Due to the manufacturing-process orientated construction of the operating surface, a maximum of ease of use and of controllability is guaranteed.

The hard- and software systems are modularly constructed and by using industry-standards, further technological developments can be made.

practical advantages

■ IPC

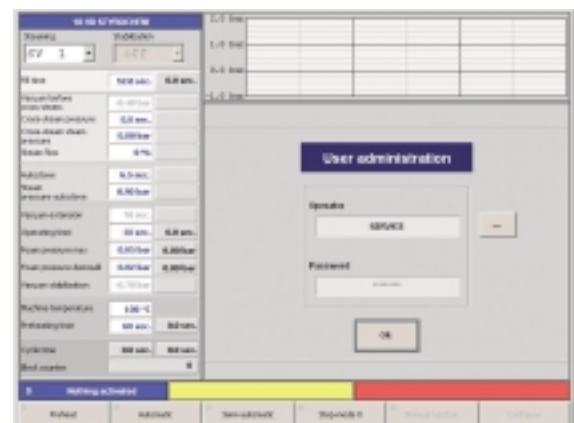
- unlimited and safe production-data filing
- operation guiding via self-explaining menu-design
- graphical diagram design of the process flow bring advantages for the setup and the quality-reliability

■ Interface

- connection via Ethernet into networks (on Windows-Basis) for the data transfer
- long-term statistics
- recording of quality-reliable data
- analysis of availability
- production planning

■ Bus system

- improved diagnostics increases the availability
- optional function groups can be bound to the communication via BUS



Block-Moulding-Machine type EBV-FB



EBV-FB with variable block-dimensions

- Sidewall continuously variable - mechanical synchronized. Space room behind sidewall is not steamed – Volume of the steam chamber is not dependent on the position of the sidewall.

Advantages of this conception:

- Symmetric steaming of the block, means homogeneous fusion and density distribution – lower steam consumption
- All sidewalls are parallel

- Inner-walls: stainless steel bar-screen; thus reduced maintenance especially operating the machine with a higher dust content in the EPS-beads
- Electronic steam pressure regulation for each wall
- Manufacturing of 100% Recycling possible



Technical data block mould	
Block moulds	<p>EBV – vertical block mould with fixed block dimensions</p> <p>block sizes: length 2m - 6m width 1m - 1,6m depth 0,5m -1,25m</p> <p>capacity of the block mould: at PS 15, 18 - 22 blocks at PS 20, 16 - 20 blocks at PS 30, 12 - 16 blocks</p> <p>under using of material that has been produced in West-Europe</p>
Block moulds	<p>EBV FB – vertical block mould with flexible block dimensions</p> <p>block sizes: length 2m - 6m width 1m - 1,6m depth 0,5m -1,25m flexible area 500 mm</p> <p>capacity of the block mould: at PS 15, 18 - 22 blocks at PS 20, 16 - 20 blocks at PS 30, 12 - 16 blocks</p> <p>under using of material that has been produced in West-Europe</p>

Subject to technical changes.